

بِسْمِ اللَّهِ الرَّحْمَنِ الرَّحِيمِ

XP

XP

XP

---

My Computer

---



Open

Install

) Install



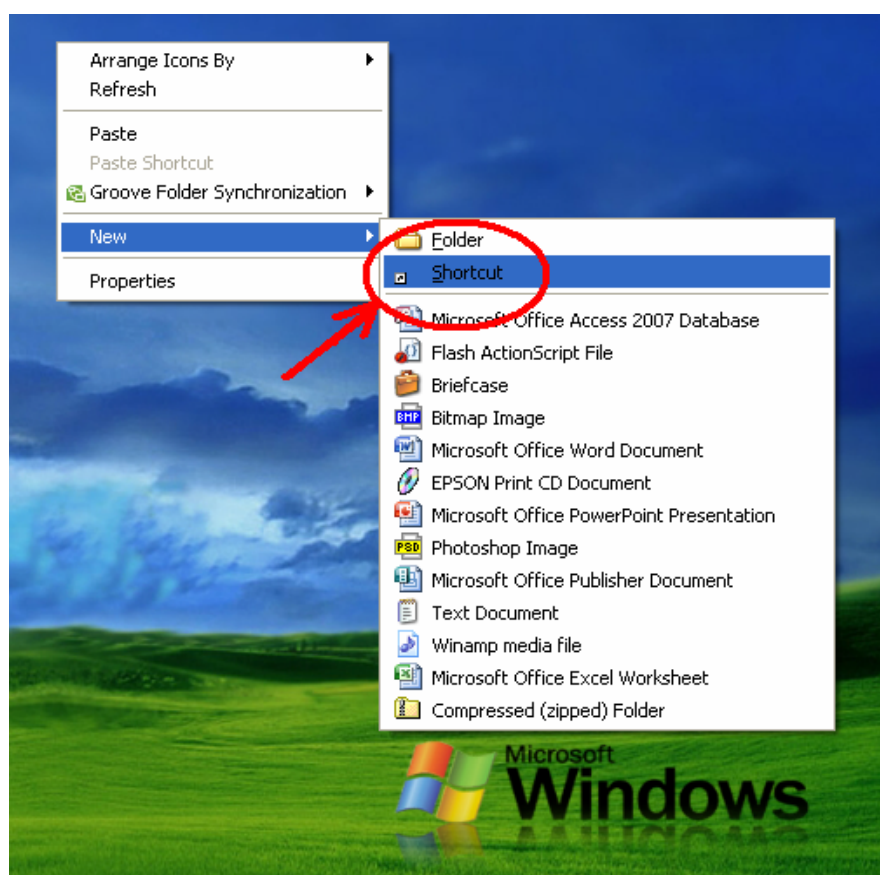
Enter

" \_\_\_\_\_ "  
" " "  
\_\_\_\_\_

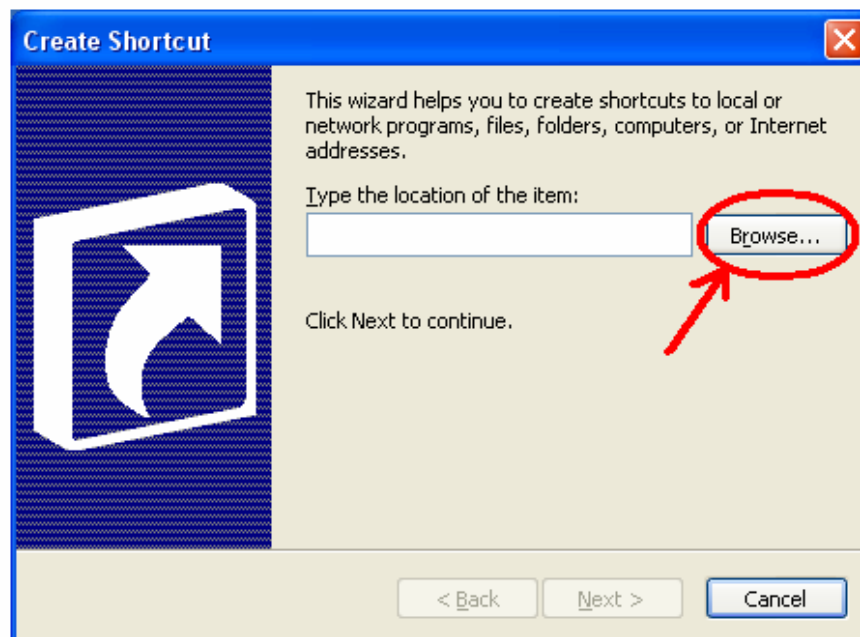
(Icon)

Shortcut

New



## Brows



## My Computer

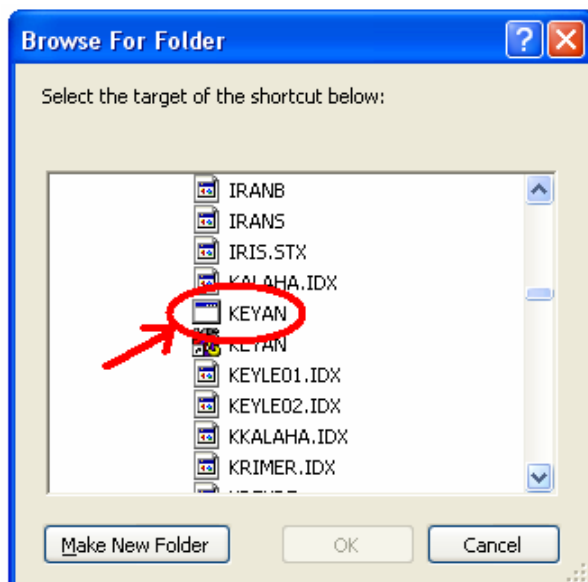




Keyan.acc



) Keyan



Ok

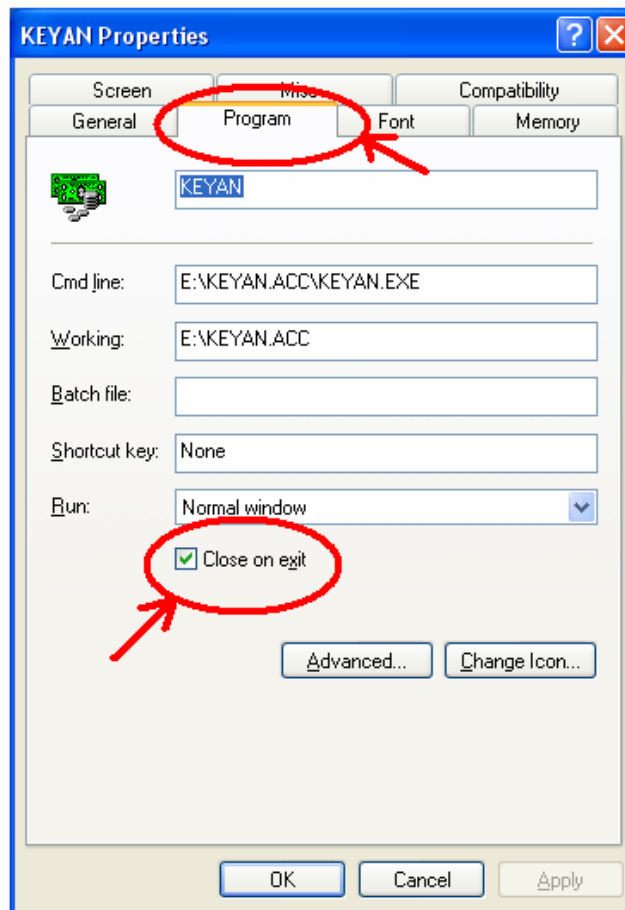
Next

Finish

Properties

Program

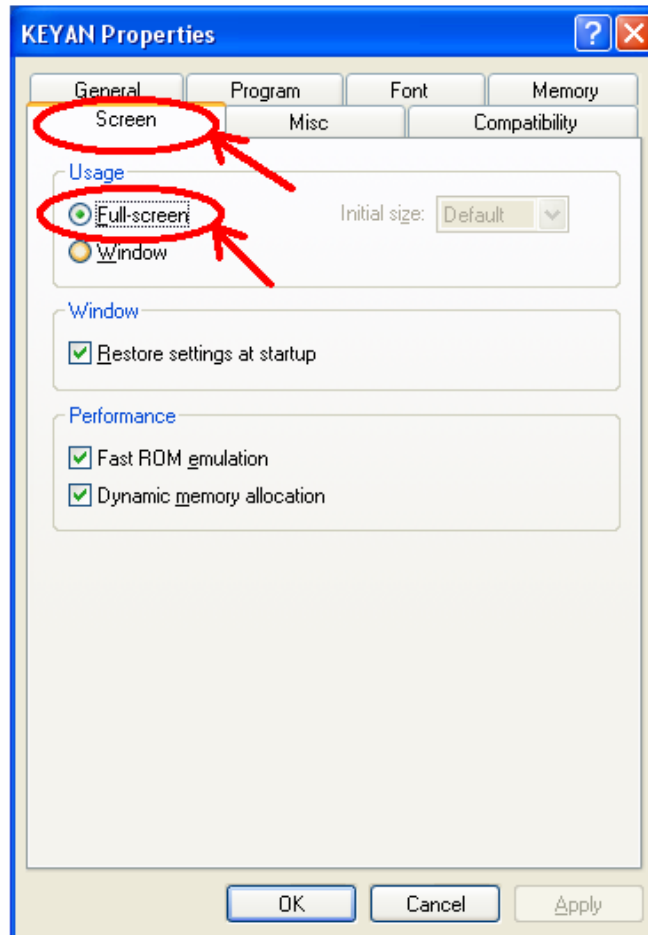
(  ). Close on Exit



Screen

(  ).

Full-Screen

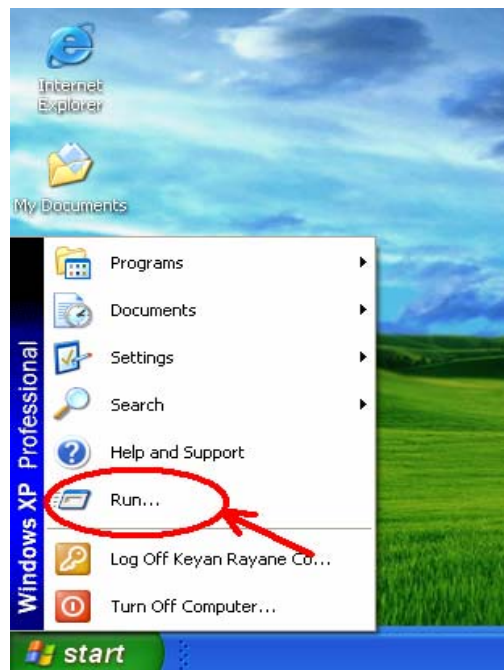


**XP** Config.sys

**Xp**

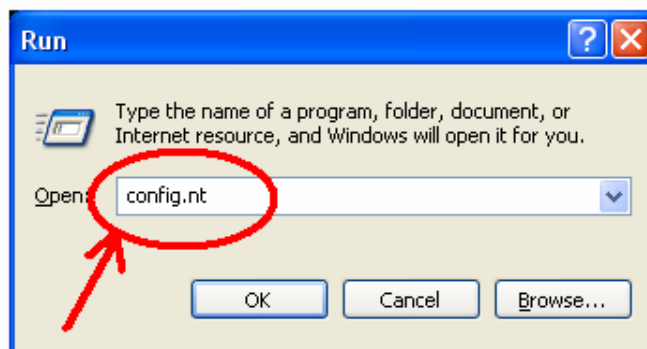
**Start**

**Run**



**Ok**

Config.nt



Page Down

Notepad

Config.nt

Files=140

Files=40

```
CONFIG - Notepad
File Edit Format View Help
REM specifies that the system should only alloca
REM space from the Upper Memory Block(UMB) area
REM and leave the rests(if available) to be used
REM loadhigh and devicehigh commands. The system
REM allocate all possible and available UMB for
REM
REM The EMM size is determined by pif file(either th
REM with your application or _default.pif). If the s
REM is zero, EMM will be disabled and the EMM line w
REM
dos=high, umb
device=%SystemRoot%\system32\himem.sys
files=40
```

Save File

( Restart ).

```
CONFIG - Notepad
File Edit Format View Help
New Ctrl+N
Open... Ctrl+O
Save Ctrl+S
Save As...
Page Setup...
Print... Ctrl+P
Exit
REM specifies that the system should only allocate
REM from the Upper Memory Block(UMB) area for
REM save the rests(if available) to be used by
REM gh and devicehigh commands. The system, b
REM e all possible and available UMB for pag
REM
REM The EMM size is determined by pif file(either the o
REM with your application or _default.pif). If the size
REM is zero, EMM will be disabled and the EMM line will
REM
dos=high, umb
device=%SystemRoot%\system32\himem.sys
files=140
```

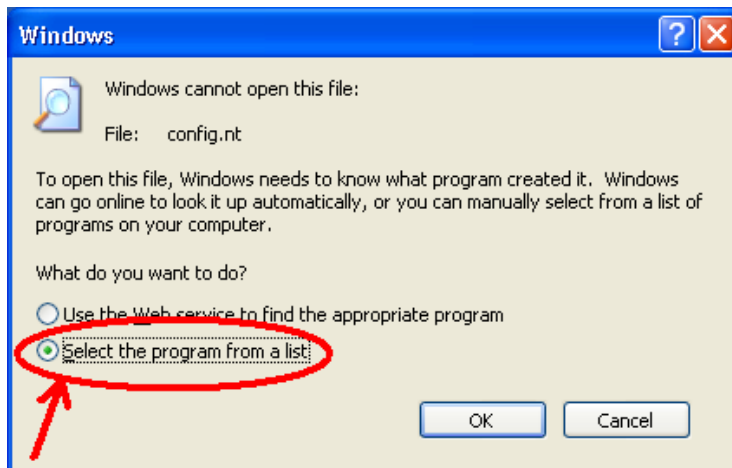


Notepad

Run

Config.nt

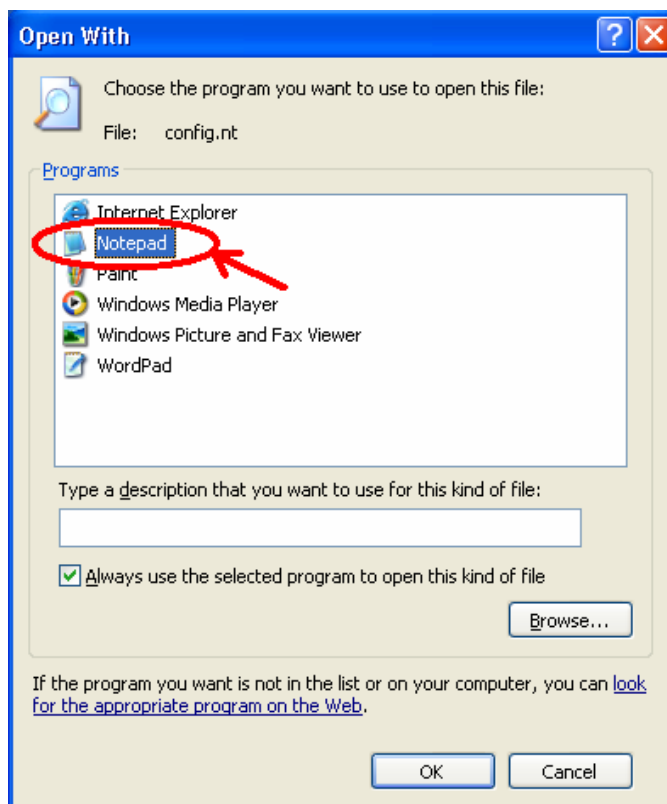
Ok



Notepad

( ) ( )

Config.nt



موفق باشید.